

Syntactic Annotation Service Description and Assumptions - v1.1.1

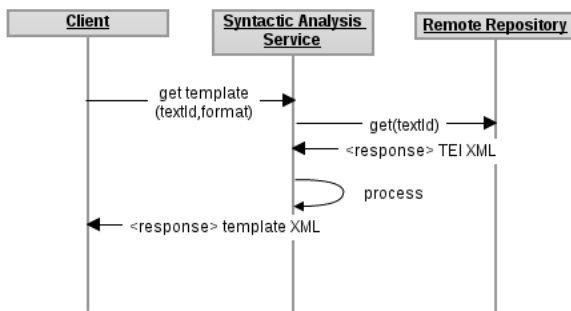
- [Description](#)
- [Collaborations](#)

Description

The Syntactic Annotation service provides retrieval, conversion and abstract query services for annotated corpora.

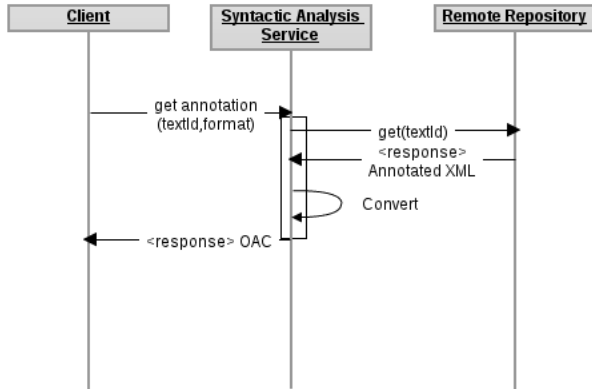
Collaborations

Syntactic Analysis - requestAnnotationTemplateForText



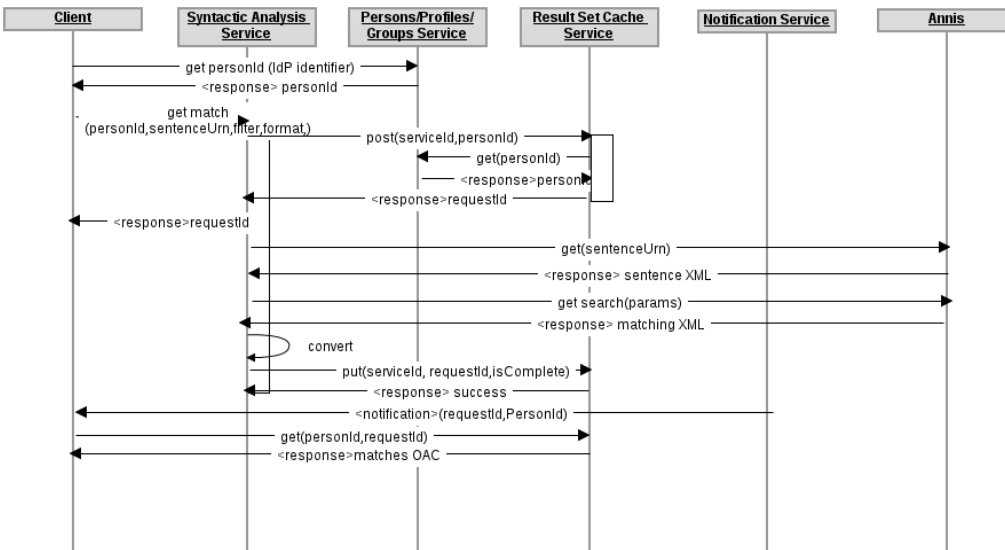
Component	Responsibility
Client	identifies textId and annotation format, issues request to Syntactic Analysis Service
Syntactic Annotation Service	identifies source repository for text; retrieves text from remote repository; formats as annotation template, returns to client
Remote Repository	supplies text

Syntactic Analysis - retrieveAnnotation sequence



Component	Responsibility
Client	identifies textId and annotation format, issues request to Syntactic Annotation Service
Syntactic Annotation Service	identifies source repository for text; retrieves text from remote repository; converts to desired format, returns to client
Remote Repository	supplies annotated text fragment

Syntactic Analysis - findSimilarTo sequence



Component	Responsibility
Client	identifies textId, comparison model and annotation format, issues request to Syntactic Annotation Service

Syntactic Annotation Service	retrieves text from remote repository; converts to desired format, returns to client
Annis	supplies annotated text fragment and query functionality
Person/Profiles/Groups	Authenticates with IDP; supplies opaque personId to BSP services; validates personId;
Result Set Cache Service	creates guid for result set; notifies notification service when result set storage is complete
Notification Service	notifies client of result set availability